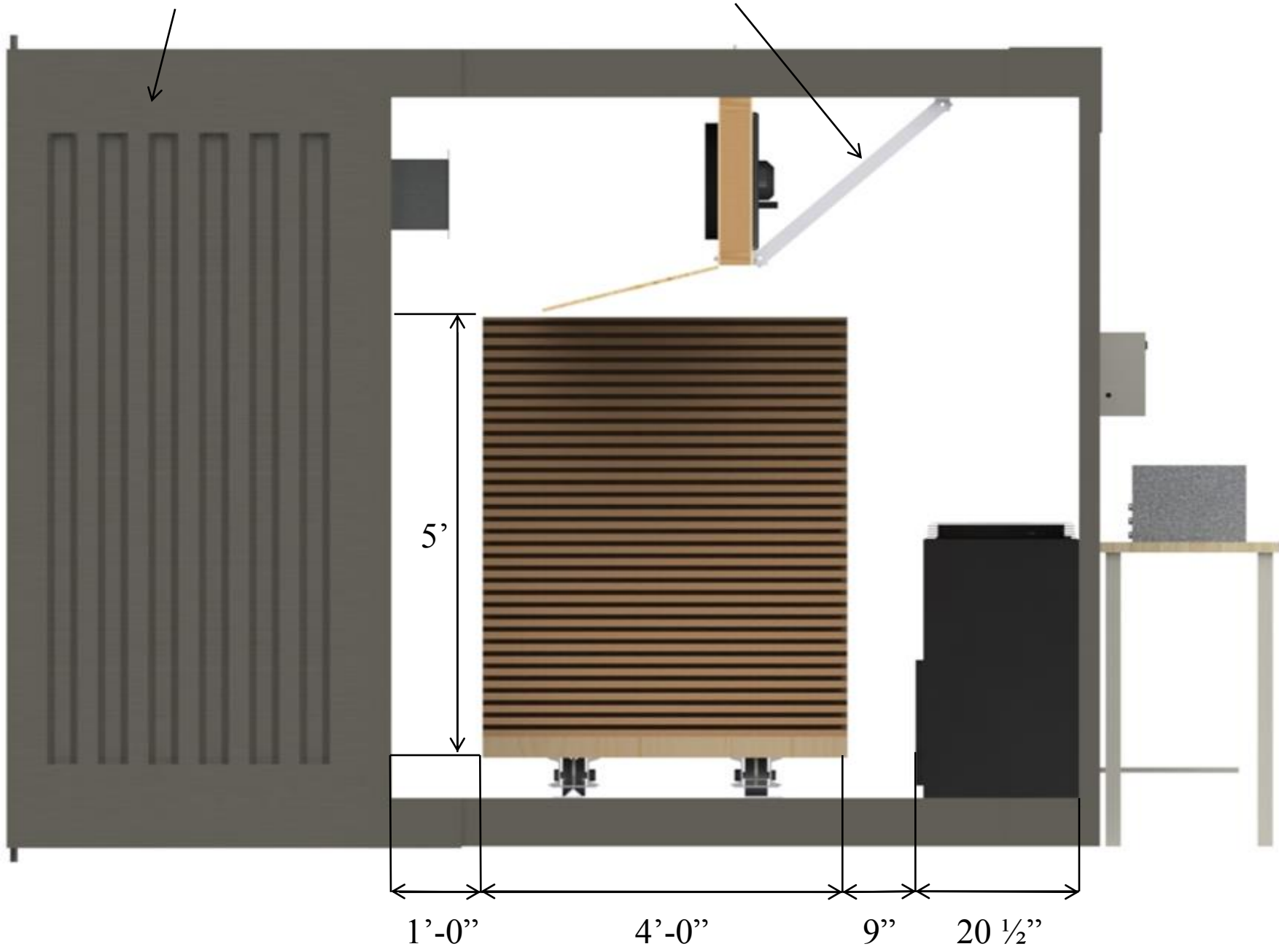


INSIDE OF OPEN
CONTAINER DOOR

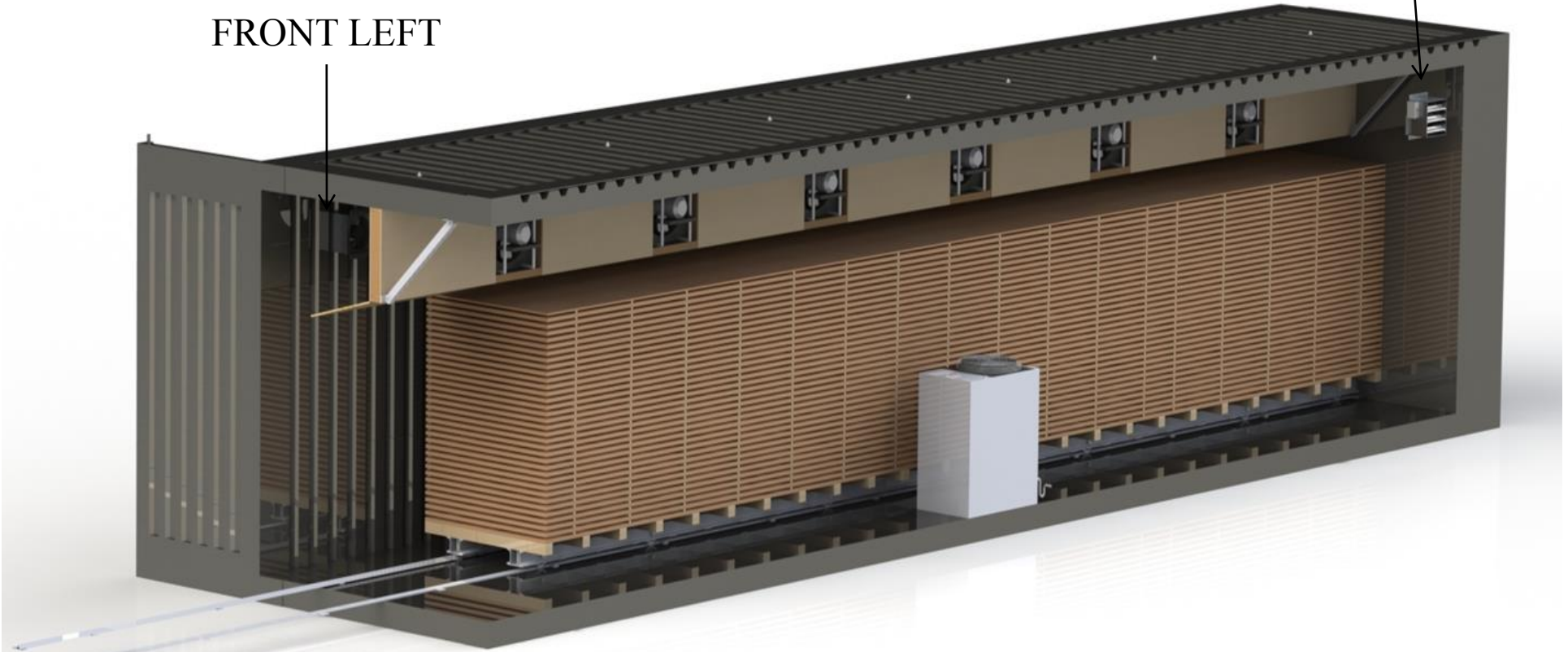
INSTALL FAN TRUSS BRACES
ON FRONT AND REAR OF TRUSS



POWER VENT
(EXHAUST)
INSTALLED ON
FRONT LEFT

CUT 10 ¼" X 10 ¼"
OPENING FOR VENTS.
SEAL WITH SILICONE
OR SPRAY FOAM

POWER VENT
(INTAKE)
INSTALLED ON
REAR RIGHT



TWO KILN CARTS
REQUIRED FOR
A 40' CONTAINER

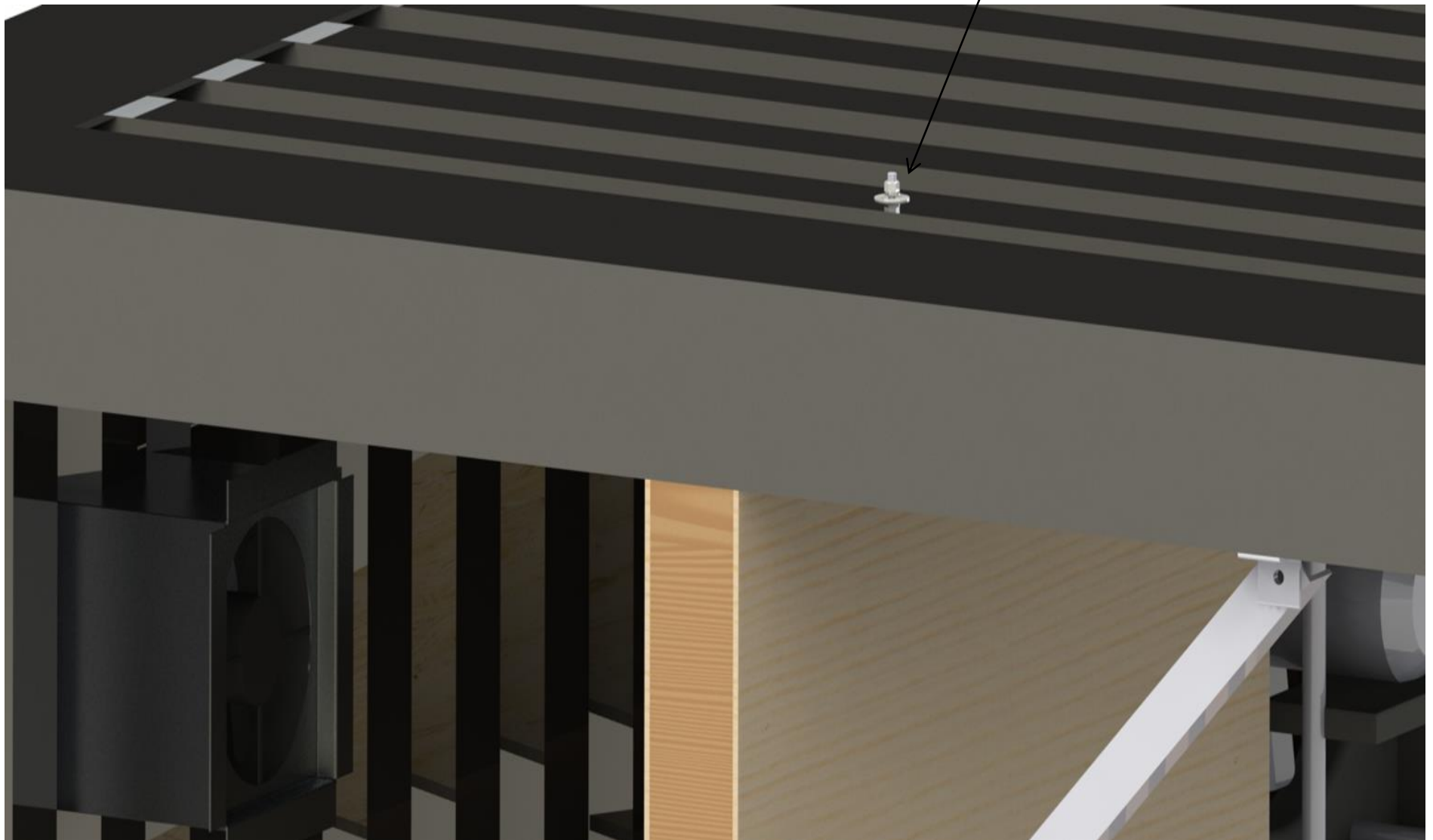
THE UNIT SITS AGAINST
RIGHT WALL OF
CONTAINER MID-WAY
DOWN WALL



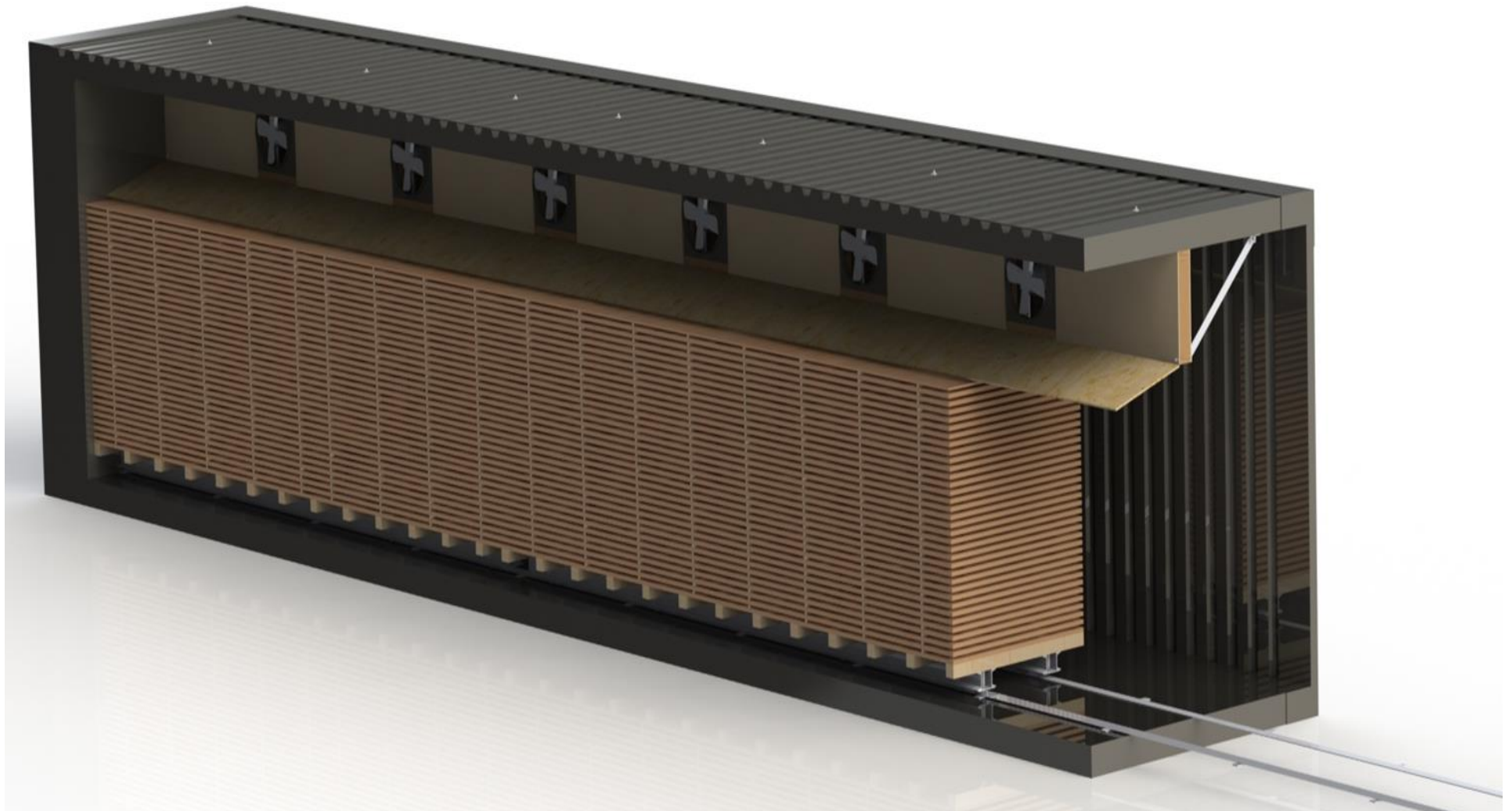
DO NOT DROP DRAIN LINE LESS THAN 4" COMING OFF UNIT. DISTANCE BETWEEN PIPES IN & OUT OF P-TRAP MUST BE AT LEAST 2". DRAIN CAN BE RUBBER, PLASTIC, OR COPPER TUBING.

FAN TRUSS ATTACHED TO CONTAINER USING 3/8" THREADED ROD WITH LARGE DIAMETER WASHERS. SEALED WITH SILICONE OR SPRAY FOAM.

3/8" THREADED ROD



FAN TRUSS IS CONSTRUCTED OF 2x4s AND PLYWOOD . WITH MULTIPLES OF 16” NON-REVERSING FANS. FAN TRUSS EXTENDS THE INSIDE LENGTH OF THE CONTAINER.

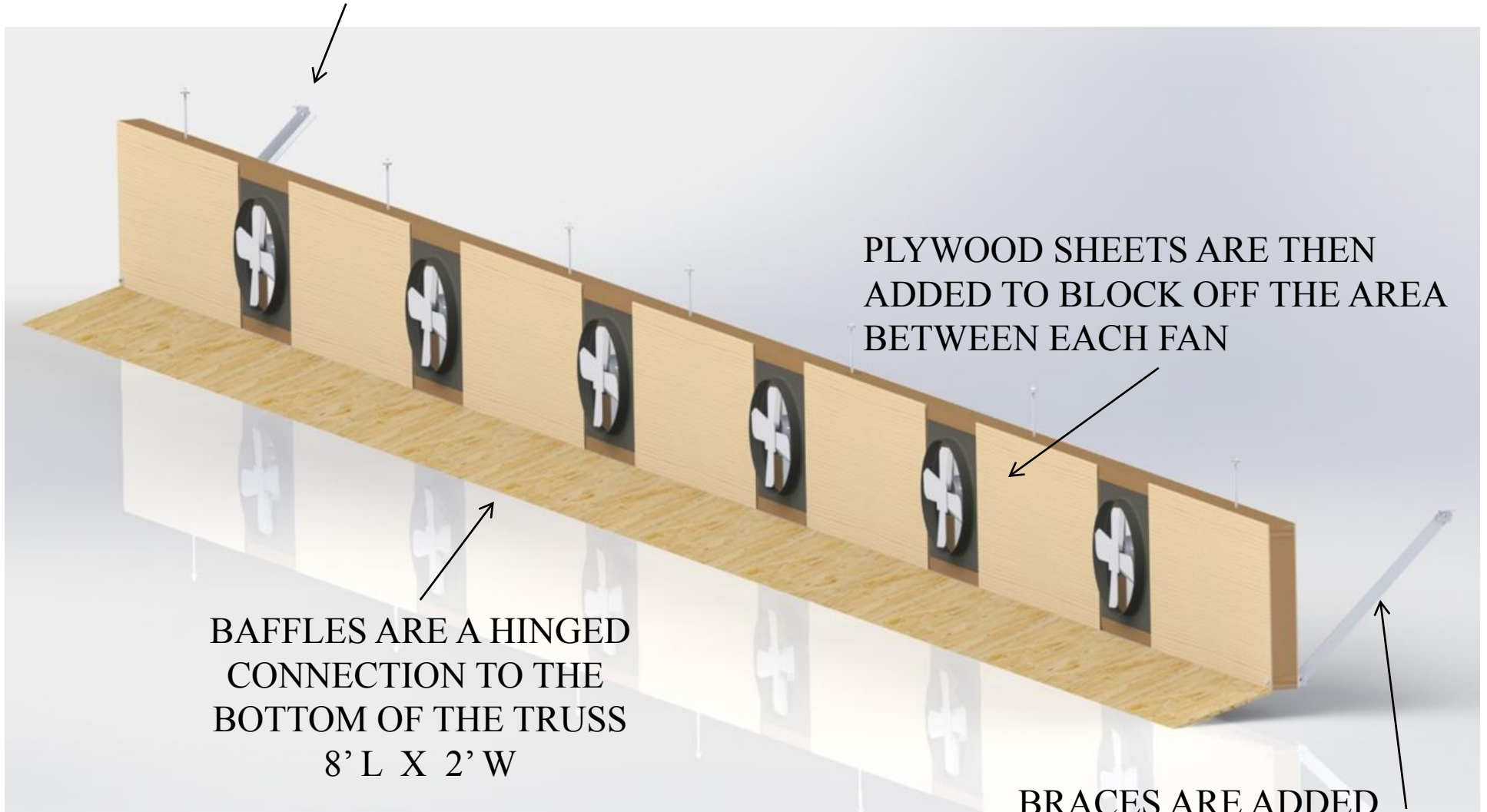


FRAME OF THE FAN TRUSS
IS MADE UP OF 2x4's ON
EITHER END WITH THE FAN
HOUSINGS EVENLY SPACED.
THE HOUSINGS ARE THEN
OUTLINED WITH 2x4's.

3/8" THREADED ROD IS
INSTALLED BETWEEN EACH
FAN HOUSING



BRACES ARE ADDED
ON EACH END OF TRUSS



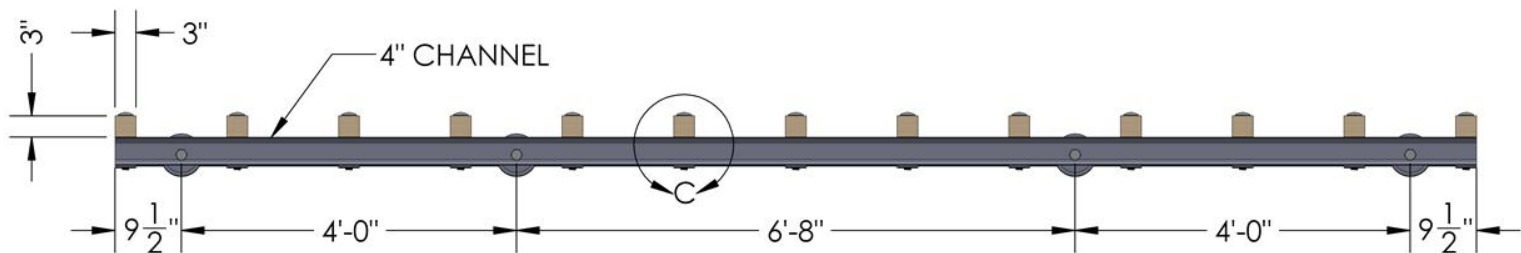
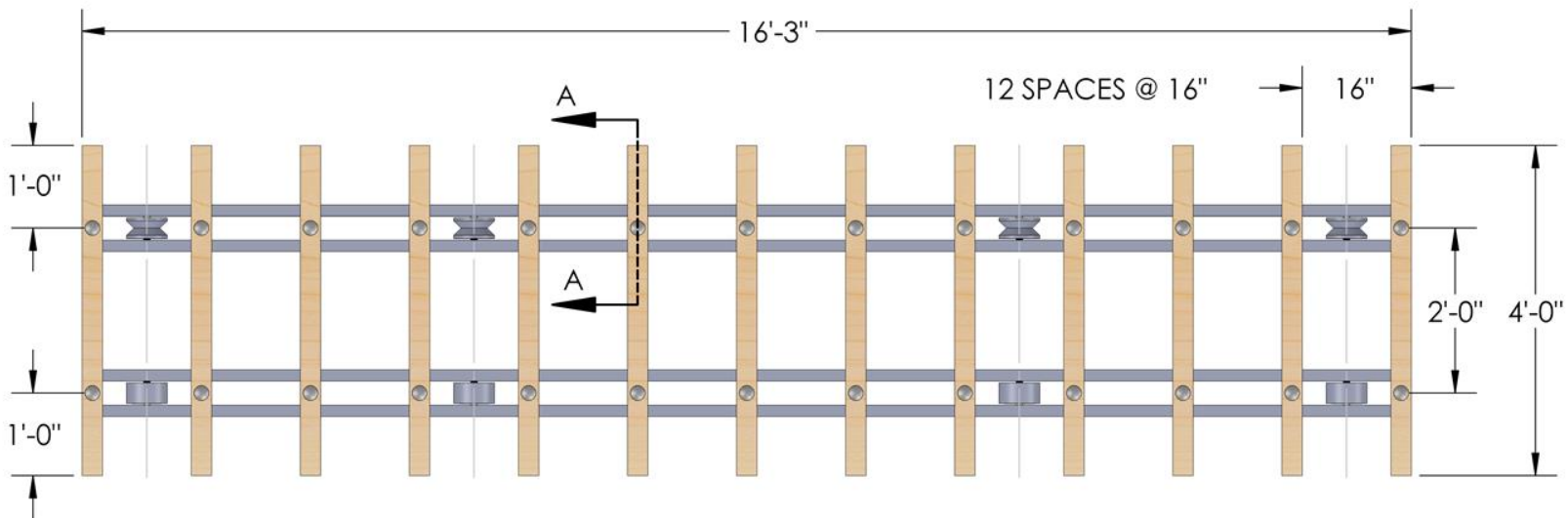
PLYWOOD SHEETS ARE THEN
ADDED TO BLOCK OFF THE AREA
BETWEEN EACH FAN

BAFFLES ARE A HINGED
CONNECTION TO THE
BOTTOM OF THE TRUSS
8' L X 2' W

BRACES ARE ADDED
ON EACH END OF TRUSS



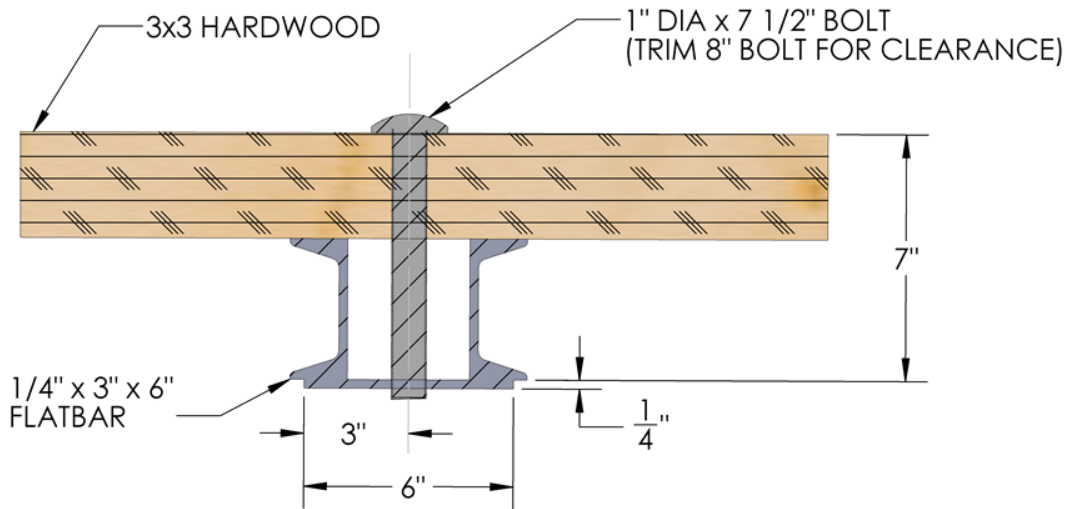
IF CONTROLLER AND PANEL ARE
TO BE INSTALLED OUTSIDE FABRICATE
STRUCTURE TO PROTECT THEM FROM WEATHER.



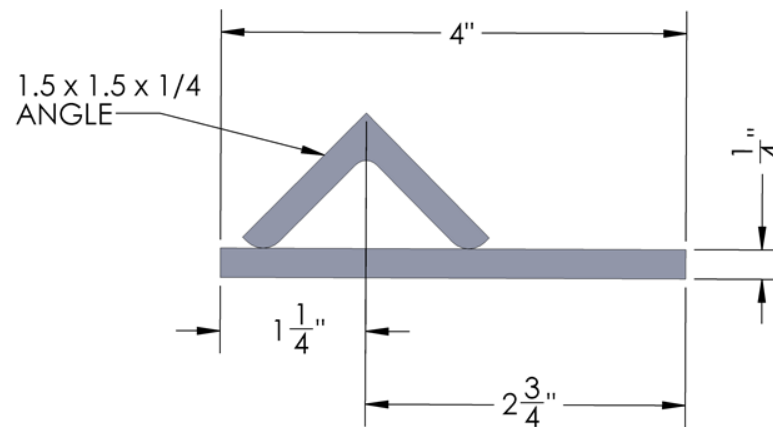
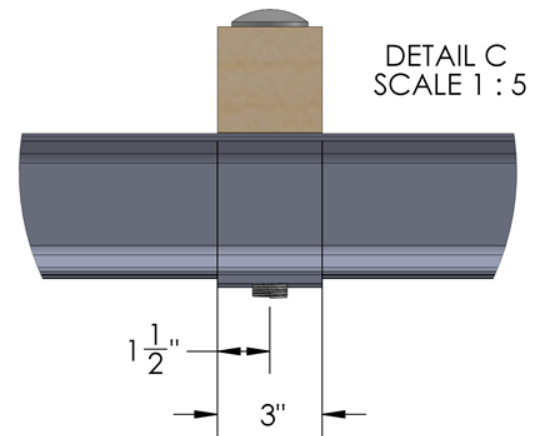
TWO KILN CARTS REQUIRED FOR A 40' CONTAINER

USE HARDWOOD FOR CROSS PIECES IF DRYING SPECIES SUCH AS OAK THAT ARE SUSCEPTIBLE TO STAINING. OTHERWISE STEEL MAY BE USED.

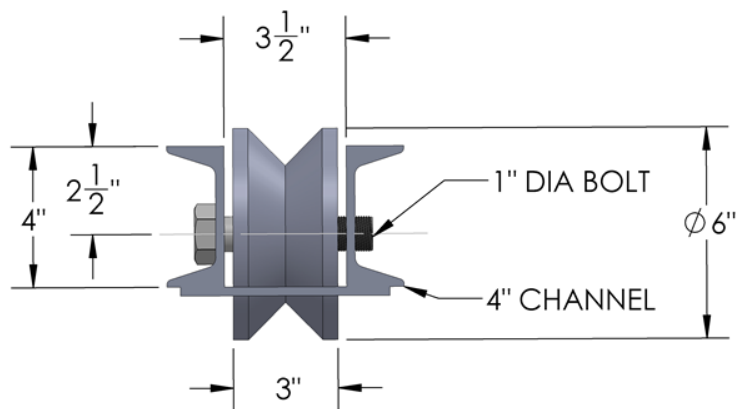
SPACE CROSS PIECES TO MATCH STICKERING PRACTICE



SECTION A-A
SCALE 1 : 5



TYP. TRACK CONSTRUCTION
FOR GROOVED WHEEL



DETAIL D
SCALE 1 : 5

5

4

3

2

1